

# Air Desk L

Pinuccio Borghonovo  
2008



Desk with return in 12mm transparent, extralight or smoked "grigio Italia" tempered glass top. Also available with painted glass top as per samples in the bright or satin version or leather effect laminated glass top. Both with extralight glass sides. On request, smoked "grigio Italia" or bright/satin painted glass sides. Bright or satin stainless steel, anodised aluminium or embossed white or black lacquered metal parts. Black hand brushed anodized aluminium, on request.

Return available on right or left side. The right or left version has to be confirmed when ordering. Without this information, the return will be on the right side.

Cable management option:

OPTION 1\_For cable management, a hole diam. cm 6 on the top with 10cm minimum distance from the edge, can be arranged upon request.

OPTION 2\_Available, on request, version with the passage of the cables through the beam to be pulled out from one side. This version is realized with hole diam. cm 3,2 on the glass top corresponding to the beam with satin stainless steel ring, hole diam. cm 3,2 on the beam + hole cm 2,5 x 4,5 on the side of the desk and on the side cap for cables to exit.

## Cm (L x P x H)

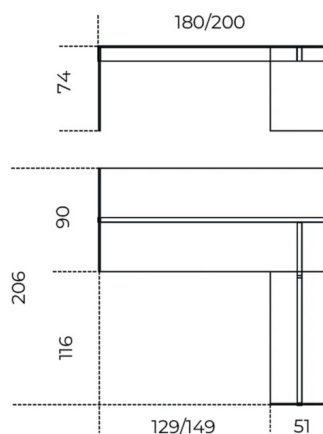
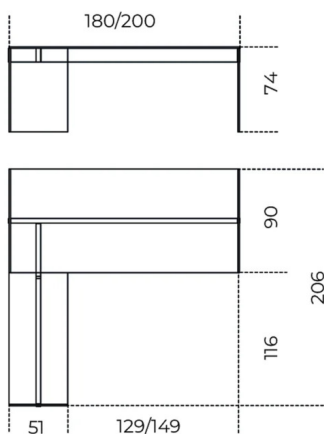
180 x 206 x 74

200 x 206 x 74

## Inches (L x P x H)

71 x 81 $\frac{1}{4}$  x 29 $\frac{1}{4}$

78 $\frac{3}{4}$  x 81 $\frac{1}{4}$  x 29 $\frac{1}{4}$



# Finishes

## Glass



Bright white



Satin white



Bright blue-grey



Satin blue-grey



Bright cadet blue



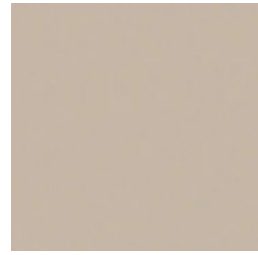
Satin cadet blue



Bright cement



Satin cement



Bright champagne



Satin champagne



Bright rose powder



Satin rose powder



Extralight



Bright taupe



Satin taupe



"Grigio Italia"



Bright dark grey



Satin dark grey



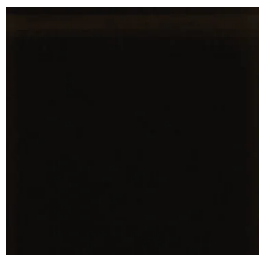
Leather effect laminated wood



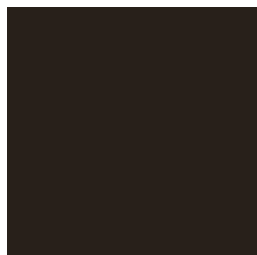
Bright liquorice



Satin liquorice



Bright black



Satin black



Bright olive



Satin olive



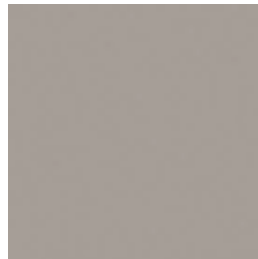
Transparent



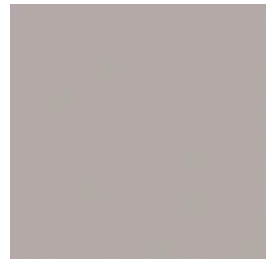
Bright green-grey



Satin green-grey



Bright mink

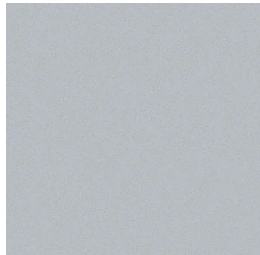


Satin mink

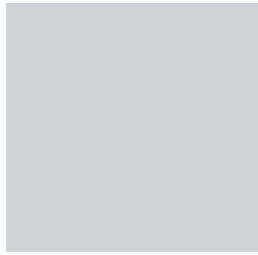
## Metal



Bright stainless steel



Satin stainless steel



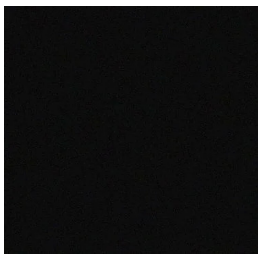
Anodised aluminium



Black brushed aluminium



Embossed white



Embossed black